



Tier 400SPD; 460 Surge Protective Device:
Installation Attachment: *To Be Used With Doc. I-O 32218-1*
Tier 400SPD Installation/Operation Manual

All electrical connections should be installed by a qualified (licensed) electrician only. All wiring must comply with the National Electrical Code (NEC) and applicable local codes.



WARNING

WARNING: is used in this manual to warn of possible personal injury.

VERIFY THAT ALL POWER CIRCUITS ARE DE-ENERGIZED AND LOCKED OUT BEFORE MAKING ELECTRICAL CONNECTIONS.

460 Assembly:

Surge Protective Device (SPD)

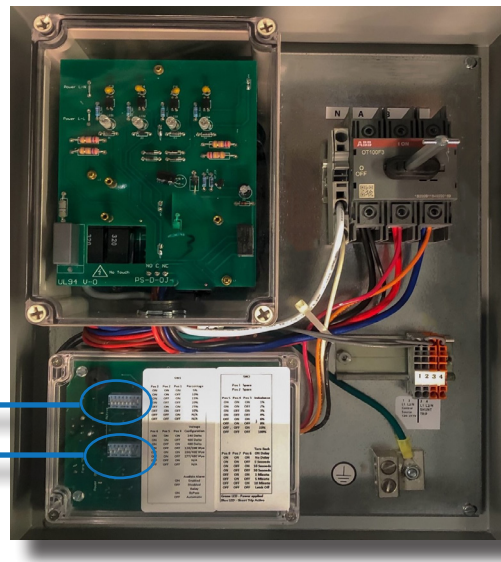
SPD Disconnect

Shunt Controller Module

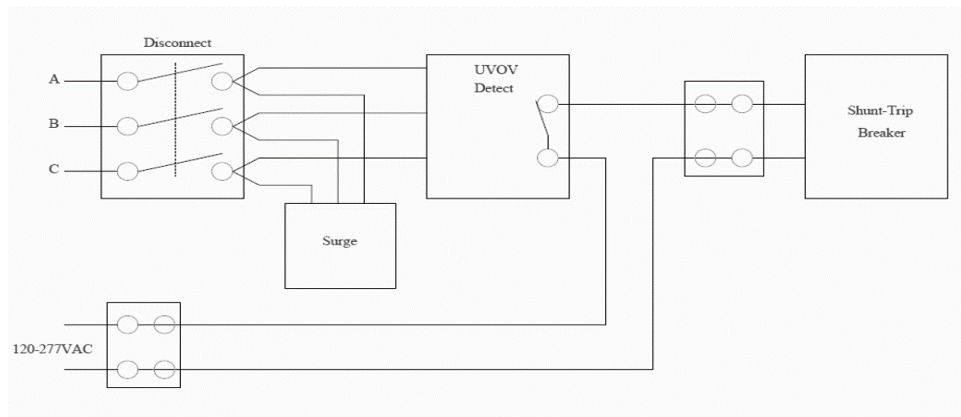
Switch 2 (SW2)

Switch 1 (SW1)

Terminals 1, 2: From Control Source
Terminals 3,4: To Shunt Trip



Wiring Diagram



Shunt Trip Controller: UnderVoltage, Overvoltage, Phase Loss & Imbalance Pin Settings

Dip Switch Settings: SW1	
Position	Activation Controls
1	% Over/Under Voltage
2	
3	
4	Voltage Configuration
5	
6	
7	Audible Alarm
8	Relay

Pos 3	Pos 2	Pos 1	%
On	On	On	5
On	On	Off	10
On	Off	On	15
* On	Off	Off	20
Off	On	On	25
Off	On	Off	30

* Factory Settings

Pos 7	Audible Alarm
On	Active
Off	Off

Pos 6	Pos 5	Pos 4	Volt/Config
On	On	On	240 Delta
On	On	Off	400 Delta
On	Off	Off	480 Delta
On	Off	Off	120/208 Wye
Off	On	On	230/400 Wye
Off	On	Off	277/480 Wye

Pos 8	Relay
On	Bypass
* Off	Auto

Dip Switch Settings: SW2	
Position	Activation Controls
1	Spare
2	Spare
3	% Imbalance
4	
5	
6	Controller Ready Reset "Delay" Time
7	
8	

Pos 1	Spare
Pos 2	Spare

Pos 5	Pos 4	Pos 3	%
On	On	On	1
On	On	Off	2
On	Off	On	3
On	Off	Off	4
Off	On	On	6
Off	On	Off	8
Off	Off	On	10
* Off	Off	Off	100

Pos 8	Pos 7	Pos 6	Delay (seconds)
On	On	On	No Delay
On	On	Off	5
On	Off	On	10
* On	Off	Off	30
Off	On	On	60
Off	On	Off	300
Off	Off	On	600
Off	Off	Off	Off